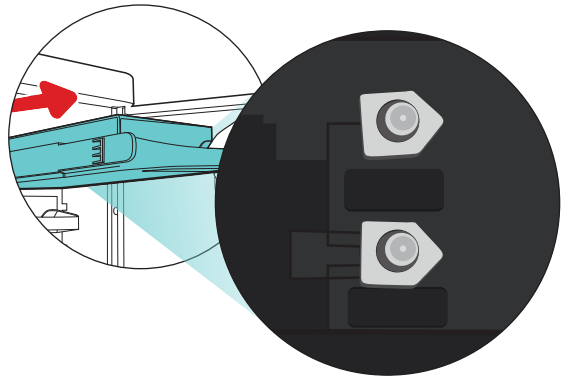
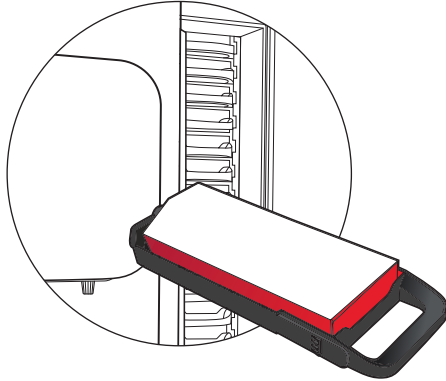


Coca-Cola freestyle Flex | Cleaning Best Practices

EVERY TIME

When replacing **ingredient cartridges** wipe **cartridge slots** using a clean cloth.

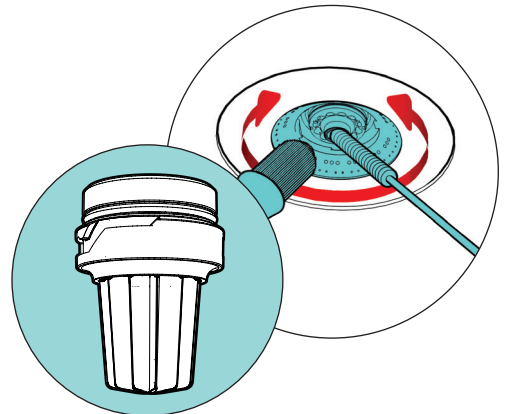
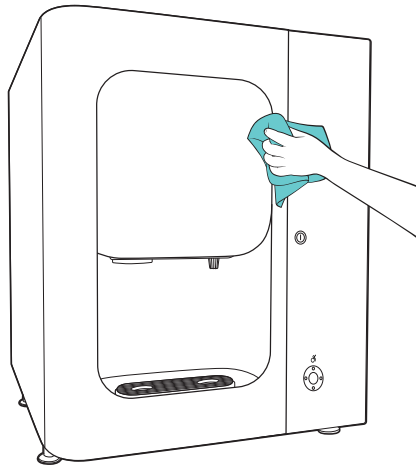
Clean **cartridge probes** until the cloth comes away clean, repeat, then allow to air dry for 2 minutes.



EVERY DAY

Wipe **interior and exterior surfaces**.

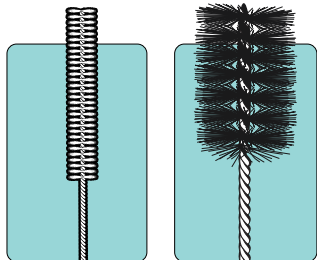
Clean, then sanitize **the nozzle and injector ring**. You must soak the nozzle tip with food-grade sanitizer. Allow to air dry for 2 minutes.



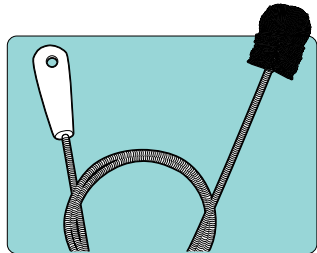
Need help or want to order small parts, call:

USA
1-800-241-COKE (2653)

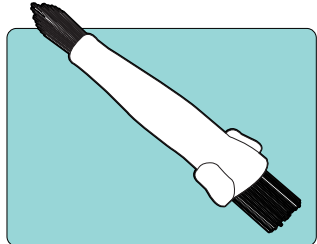
Canada
1-800-318-COKE (2653)



Wire Handled Nozzle Brush #1145555
Ice Chute Brush #143257

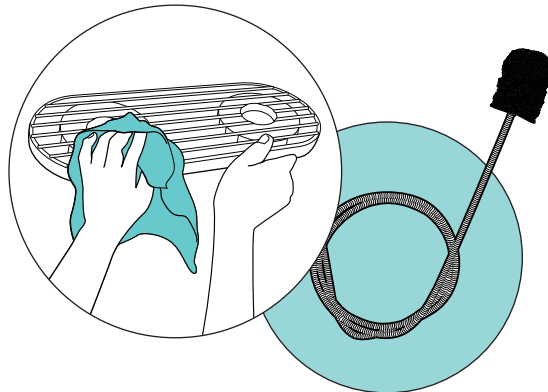


Drain Cleaning Brush #144925



Nozzle & Injector Ring Brush #149326

Wash **cup rest and drip tray**. Scrub **dispenser drain** with drain cleaning brush. Pour the remaining sanitizer solution down the drain.

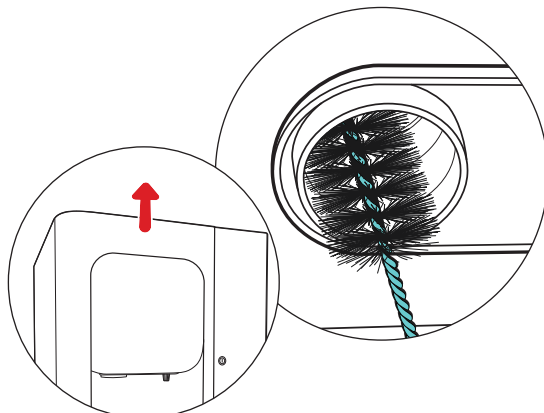


IMPORTANT

Always use approved food-grade sanitizer solution when cleaning your dispenser.

EVERY WEEK

Clean **manual ice fill lid** on the top of the dispenser. Clean, then sanitize inside **the ice chute** with food-grade sanitizer.



EVERY MONTH

Turn off dispenser, remove the ice bin lid, and thoroughly clean then sanitize **the ice bin**.

