
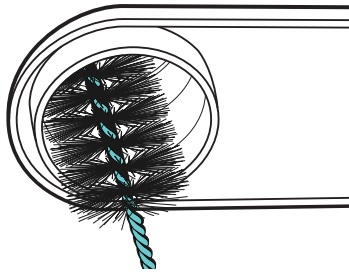


# Cleaning Ice Chute, Ice Bin, and Ice Bin Lid

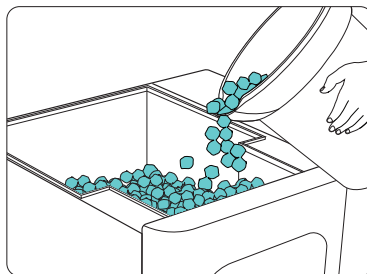
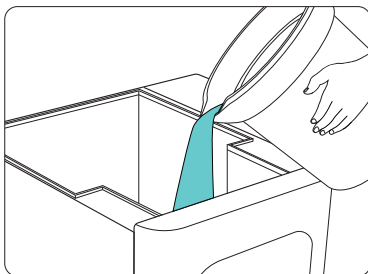
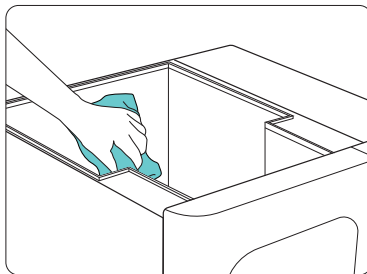
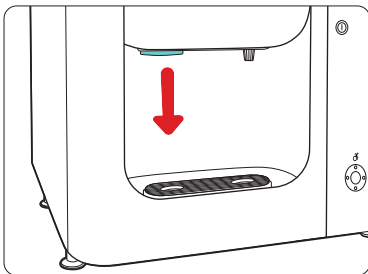
## WEEKLY ice chute cleaning:

- 1 Turn off power using the green power button.
- 2 Using the ice chute brush and approved sanitizer solution, clean the inside of the chute.
- 3 Wait two minutes to allow to air dry, then repeat step 2 with fresh sanitizer solution.  minutes
- 4 Wipe the outside of the ice chute tip using a clean cloth and fresh sanitizer solution. Allow to air dry before resuming normal operation.



## MONTHLY ice bin and ice bin lid cleaning:

- 1 Remove all ice by using the on screen ice button\*.
- 2 Power off and unplug the dispenser. Remove the ice bin lid and pour warm water slowly into the bin to melt the remaining ice.
- 3 Spray approved sanitizer solution (Kay-5®) onto all internal surfaces of ice bin and both sides of ice bin lid. Wipe or scrub areas within reach inside the bin with either a clean cloth or an ice bin brush (small parts #149322).
- 4 Spray approved sanitizer solution on all internal surfaces and lid again, allow draining and air dry. Return to normal operation.

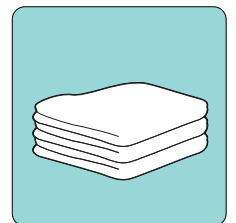


**NOTE:** For complete disassembly instructions, contact your Coke representative.

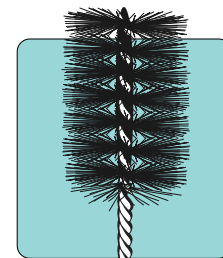
Order small parts by calling  
**1-800-241-COKE**



Kay-5 Sanitizer®  
#24041



Microfiber Cloth  
#127723



Ice Chute Brush  
#149322

**!** Store-bought or “bagged ice” should NEVER be used as it may seriously damage the Coca-Cola Freestyle® Flex dispenser ice bin.



### Helpful hints: Small Parts Ordering

Coca-Cola Freestyle offers small parts for free for a value of up to \$25/per call, shipped directly to your outlet. To request a small parts order, call the support team at 1-800-241-COKE (2653).

\*If a top-mounted ice maker is installed, follow manufacturer’s recommendation for cleaning.

For more information and training resources on Coca-Cola Freestyle, please visit on [crewconnect.coca-cola.com](http://crewconnect.coca-cola.com)