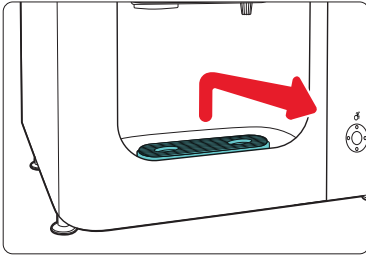


Cleaning Cup Rest and Drain Tray

DAILY cup rest and drain tray cleaning:

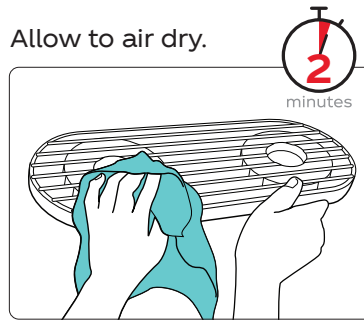
- 1 Remove the cup rest and drain strainer.



- 2 Dip a clean cloth in approved sanitizer solution.

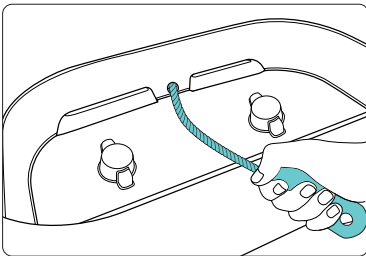
Clean the cup rest and drain strainer. Wait 2 minutes and repeat with fresh sanitizer solution.

Allow to air dry.

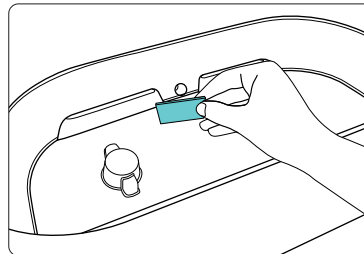


- 3 Use the drain cleaning brush (small part #144925) to scrub the dispenser drain.

Pour remaining sanitizer solution slowly down drain. Ensure the drain empties properly.



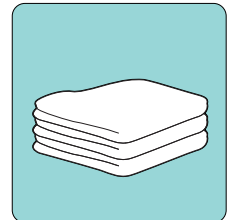
- 4 Replace the cup rest and drain strainer.



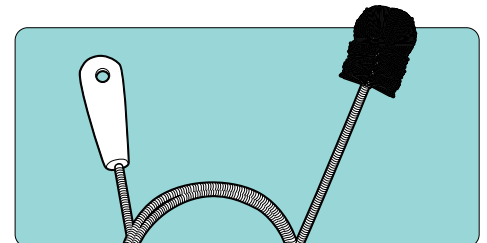
Order small parts by calling
1-800-241-COKE



Kay-5 Sanitizer®
#24041



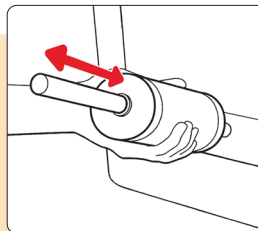
Microfiber Cloth
#127723



Drain Cleaning Brush
#144925

! If ice bin fails to drain, remove the ice bin drain strainer and clear the area of any trash.

Press the drain plunger into the mouth of the drain, then push the plunger rod firmly to force air down the pipe to clear the clog. Resume cleaning with drain cleaning brush.



For more information and training resources on Coca-Cola Freestyle, please visit on crewconnect.coca-cola.com