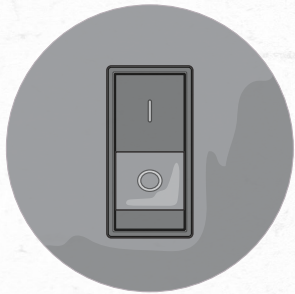




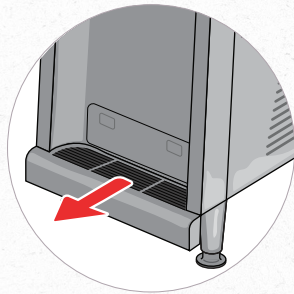
# BUBBLER DISASSEMBLY AND ASSEMBLY

These instructions are dependent on equipment model and size installed. Contact your local Coca-Cola service provider for assistance with your Bubbler Dispenser.

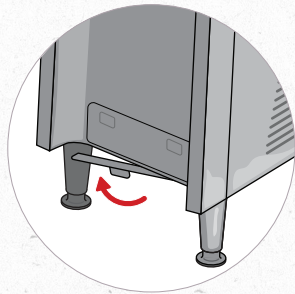
## Disassembly



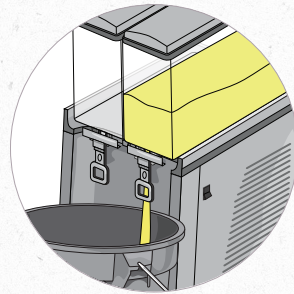
1 Unplug the dispenser or turn the power switch off.



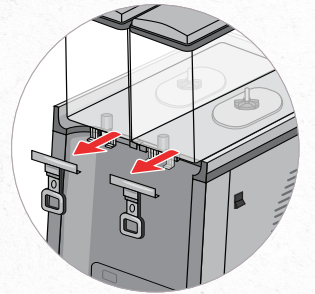
2 Remove the drip tray and cover.



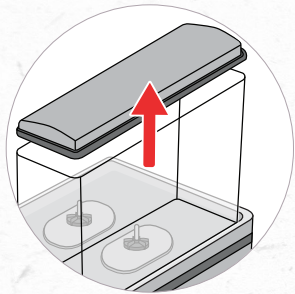
3 Rotate support brackets for drip tray.



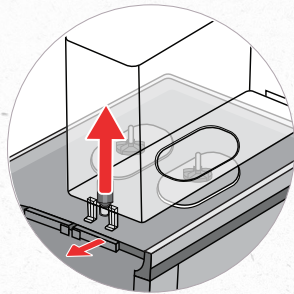
4 Drain bowls of remaining contents.



5 Remove handles.

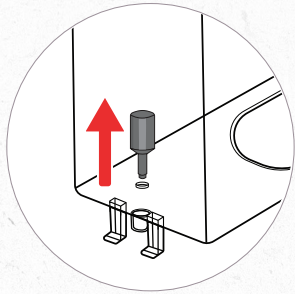


6 Remove bowl covers.

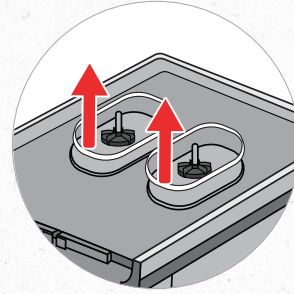


7 Press release latch on front of the machine before removing bowls.

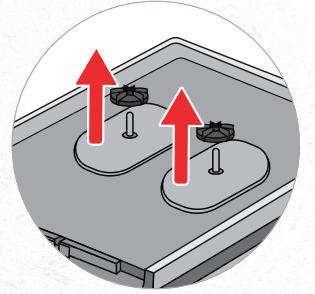
NOTE: Machine must be off



8 Lift dispense valves from bowls and remove o-rings.



9 Remove bowl gaskets.

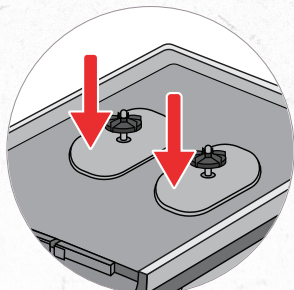


10 Remove mixing impellers.

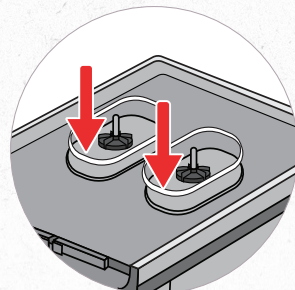
## Assembly



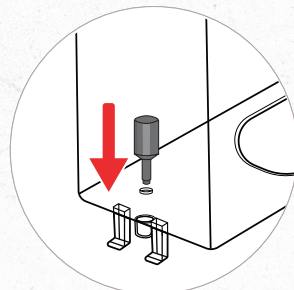
1 Wash hands with soap and water.



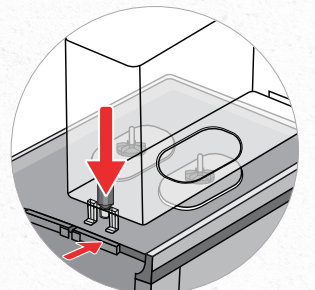
2 Install mixing impellers.



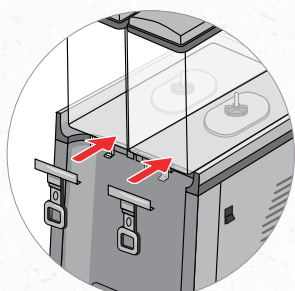
3 Install bowl gaskets.



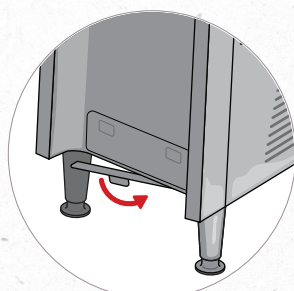
4 Place o-rings on dispense valves (check to see if nicked or twisted) and place valve in bowls.



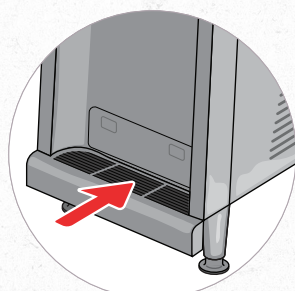
5 Insert bowl lip underneath lock position on the back of the top tray. Then, press down on the front of the bowl until you hear a click indicating the bowl is locked in place.



6 Install handles.



7 Flip out support bracket for drip tray.



8 Place drip tray and cover back on dispenser and resume use.

**NEED ASSISTANCE?** The myCoketech Team is here to help.  
Go to [myCoke.com/ESPortal](https://myCoke.com/ESPortal) or call/text 1-800-241-COKE (2653)

*Coca-Cola*