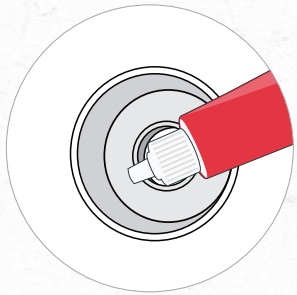


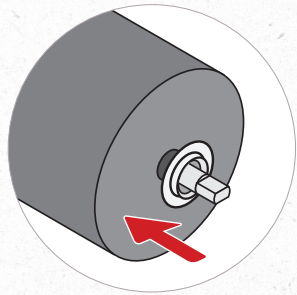


FROZEN UNCARBONATED BEVERAGE (FUB) ASSEMBLY PROCEDURES

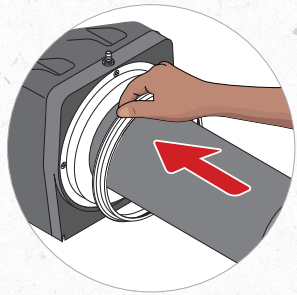
Assembly After Cleaning



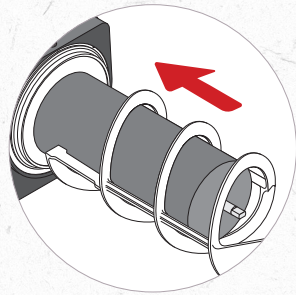
1 Apply lubricant to grommets on side facing cooling drum.



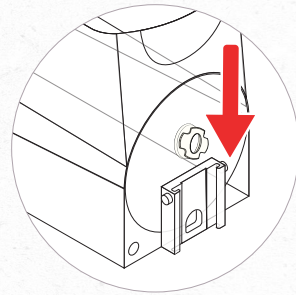
2 Install grommets (push as far as they will go) on the ends of the cooling drums.



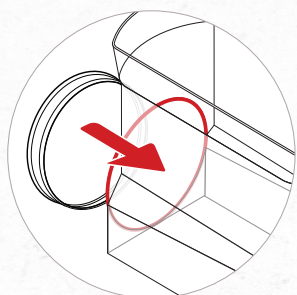
3 If you have Ultra-2 hopper seals, install them on the base of each cooling drum.*



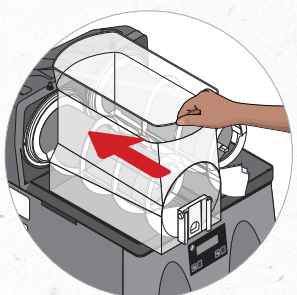
4 Align the auger shaft with the flat fin of the auger. Push augers onto cooling drum and rotate until the flat fins are flush inside the auger.



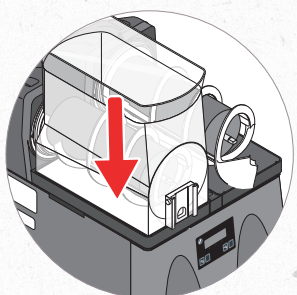
5 Install auger nose bushing into interior slots.



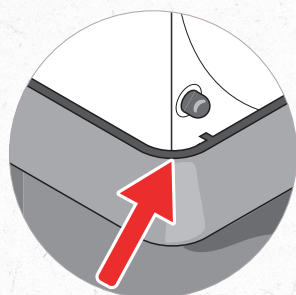
6 If you have Ultra-NX hopper seals, install them over the back of each hopper.*



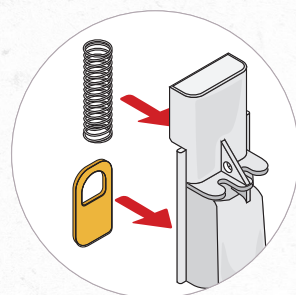
7 Install hoppers over the augers and cooling drums.



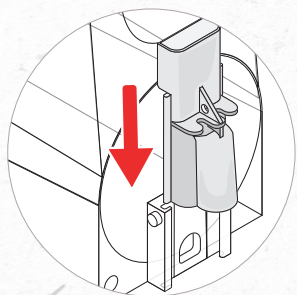
8 Slide the hoppers into place and push down.



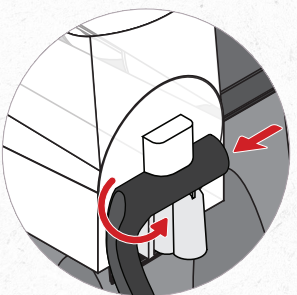
9 The hoppers are seated when the lock plunger snaps into place and it sticks out.



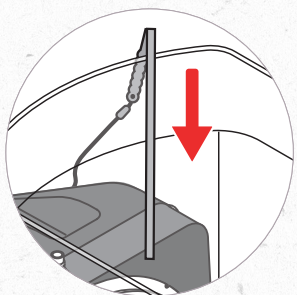
10 Place springs and seal in the faucet valve.



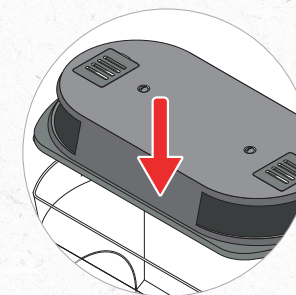
11 Carefully slide faucet valve assembly into place on the hopper.



12 Install a handle by starting the right side over the right pivot pin. While slightly twisting the handle, spread the left side over the left pivot pin to snap into place.



13 Install lever probes at the top rear of the hoppers.

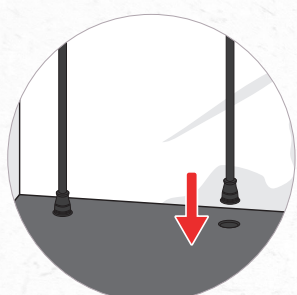


14 Set lids on the hoppers.



IMPORTANT

If this is an autofill unit, slide the hopper fitting into place in the slot on the hopper.



15 Attach each of the hopper lid cords on the back of the hoppers.



16 Assemble drip tray and slide onto metal extensions from base.



17 Turn ON augers and cooling function to desired settings.

*When assembling, the step of placing the hopper seal back on machine may vary based on your hopper (Ultra-NX or Ultra-2). Please follow the indicated machine note for hopper seal.

NEED ASSISTANCE? The myCoketech Team is here to help.
Go to myCoke.com/ESPortal or call/text 1-800-241-COKE (2653)

