

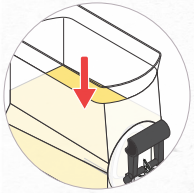


TROUBLESHOOTING

QUICK CHECKLIST BEFORE YOU CALL

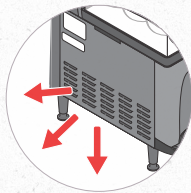
Save Time & Money

1 Lid lights flash on and off, or auger becomes exposed to air



Refill beverage hopper

2 Product will not freeze



In case of high temperature, ensure a minimum of 4" air space on all sides

NOTE: Max ambient temp not to exceed 90°F



Temp might be set to **OFF** or **CHILL**. Set temp setting to **ICE**.

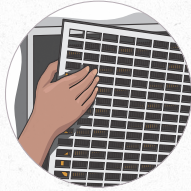


Set consistency setting to higher value

NOTE: Default value is 10, Range (01-16)

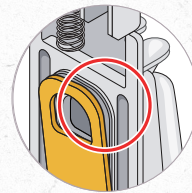


Ensure the power outlet is properly rated



If the filter is dirty, clean the filter

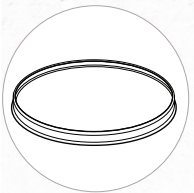
3 Faucet leakage



Remove and inspect faucet seal
• If misaligned, realign seal
• If damaged, order replacement or call for service

NOTE: Do NOT lubricate faucet seal

4 Product leaking below the hopper



Remove and inspect hopper seal
• If misaligned, realign seal
• If damaged, order replacement or call for service

Depending on hopper version, seal and attachment will vary

5 Display message reading: Filter cleaning required



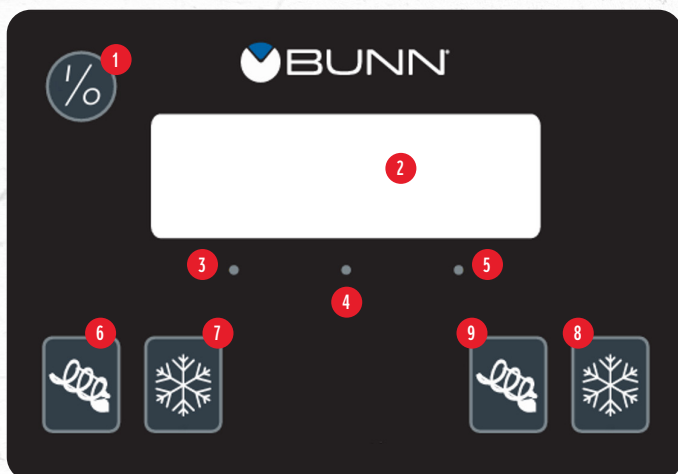
Clean filter and hold left dot button for 3 seconds to reset message

6 Display Message: * Sensor Error



Call for service

Bunn Interface



1 Main Power Switch

2 LCD Display Screen

3 Left Dot Button

4 Center Dot Button

5 Right Dot Button

6 Left Auger On/Off Button - Auger Refill

7 Left Ice Control Button - Toggle to Off, Ice, Chill, Defrost

8 Right Ice Control Switch - Toggle to Off, Ice, Chill, Defrost

9 Right Auger On/Off Button - Auger Refill

NEED ASSISTANCE? The myCoketech Team is here to help.
Go to myCoke.com/ESPortal or call/text 1-800-241-COKE (2653)

