

Cleaning cartridge slots

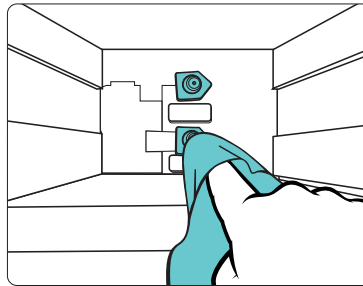
To keep your dispenser running smoothly, crew members should pay special attention to wiping down cartridge slots avoiding build up of syrup, dust, and other residue.

Every time you change a cartridge:

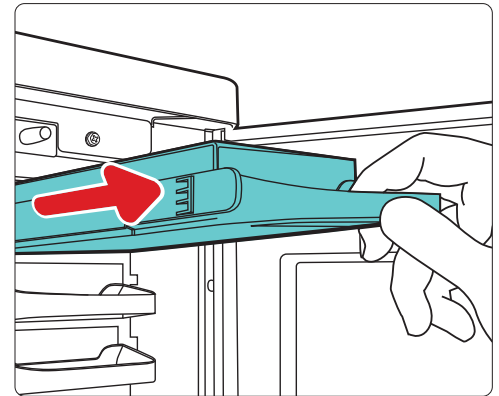
- 1 Prepare a bucket of approved sanitizer solution.



- 2 Dip a clean cloth in approved sanitizer solution, wipe the probes (that insert into cartridges), then dip a new clean cloth into the sanitizer solution and wipe the probes again to sanitize.



- 3 Confirm cartridge probes and deck are clean and dry before moving forward. Make sure probes have not accumulated any foil build up from packages because this can lead to greater leaking.



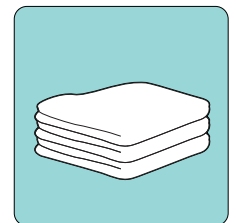
Need help or want to order small parts, call:

USA
1-800-241-COKE (2653)

Canada
1-800-318-COKE (2653)



Kay-5 Sanitizer
#24041



Microfiber Cloth
#127723



Helpful hints:

Accessing ingredient cartridges

Did you know there are three ways to open the dispenser door?

- Secret handshake
- Hidden lock or pinhole access (depending on model)
- Scan a cartridge



DON'T FORGET When replacing the cartridges after cleaning, ensure cartridges are positioned properly in slot.

Learn more by watching tutorial videos in English or Spanish on crewconnect.coca-cola.com